

# Contents

St. George's Clubclass	2
Worthing	2-3
Accommodation	3
Courses	4
Social Programme	5
More about Worthing	6
Getting to/from Worthing	7

St. George's Clubclass  
Revenue Chambers  
Chapel Road  
Worthing  
West Sussex BN11 1BG  
England

Tel: +44 (0)1903 203389  
Fax: +44 (0)1903 231039  
info@sg-cc.com  
www.sg-cc.com



St. George's Clubclass  
School of English

# ST. GEORGE'S CLUBCLASS SCHOOL OF ENGLISH

WWW.SG-CC.COM

## TAKE THE RIGHT DIRECTION

# WELCOME TO ST. GEORGE'S CLUBCLASS

## ST. GEORGE'S CLUBCLASS School of English

The School is situated right in the town centre so that students have easy access to the shops, entertainment facilities and the seafront. The school has excellent classrooms and a well-equipped library/study room. There is an IT suite which students can use for study or for access to the Internet and to send emails to their friends and family. The comfortable student lounge provides students with a place to socialise and to take their breaks. The lounge is also used for student parties. The garden offers a similar facility and is also used for student barbecues.

The teaching staff at St. George's Clubclass are well qualified and experienced and work hard to ensure that students have positive learning experiences and have every opportunity to improve their skills in English and where appropriate to prepare them thoroughly for Cambridge or other public examinations.



The classes, at the school, are limited to a maximum of twelve students and there will always be a good mix of nationalities so that students will always have an opportunity to practise their speaking and listening skills.

In the office our friendly staff is on hand to answer students' questions and to give any help that will make our students' stay more comfortable and enjoyable.

## WORTHING

Worthing is situated on the South coast of England, placed between the beautiful South Downs and more than 5 miles of coastline which is the sunniest in the country. The promenade with its marvellous Pier is a magnet to visitors who enjoy the beach for swimming, sunbathing, fishing and windsurfing.

Visitors have been enjoying the facilities of Worthing since members of the Royal Family came here in the 18<sup>th</sup> century. King Edward VII spent the summers between 1907 and 1910 at Beach House while Oscar Wilde found Worthing such a 'charming town' that he spent the summer and autumn of 1895 in the town while he wrote his famous play 'The Importance of Being Earnest'. In the modern era visitors of all types; holiday-makers as well as students find Worthing a thriving centre with much to enjoy.





The town provides a great shopping experience, having department stores, covered and open markets as well as many specialist shops set in pedestrianised streets where you can also take a break in one of the many pavement coffee shops.

Entertainment to suit every taste can be found in Worthing, which has superb theatres and cinemas as well as a mix of dance clubs, bars and cafes. There are numerous restaurants offering a wide range of food including French, Italian, Greek, Indian, Chinese, Spanish, etc. as well as more traditional English food. Visitors can also enjoy our superb museum and art gallery or take a leisurely stroll in one of the beautiful parks and gardens or have a game of tennis or ten-pin bowling or perhaps keep fit at the Sports Centre.

Worthing is within easy reach of many places of interest to our students. London is only 1 hour 15 minutes by train. Other examples are Brighton with its fascinating Royal Pavilion, historic Arundel dominated by the massive castle, or Chichester the medieval walled capital of West Sussex where art works by Chagall and Sutherland can be seen in the Norman Cathedral. Students always enjoy the Royal Navy Dockyard at Portsmouth with its unique collection of 16<sup>th</sup>, 17<sup>th</sup> and 19<sup>th</sup> century ships. All of these centres are 1 hour or less from Worthing by train.

Whenever students come to study in Worthing they can always be sure of a warm welcome and find plenty of interesting things to do in their leisure time. Above all Worthing is considered to be a very safe place to live, to study and to make new friends.

## ACCOMMODATION

Worthing has a wide choice of hotel and bed and breakfast accommodation but the vast majority of our students chose to stay with English Host Families.

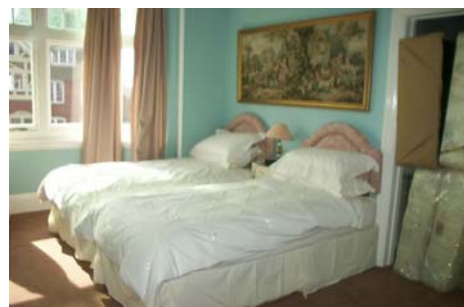
There are great advantages for the student in staying with an English Family. Students gain experience of English family life and of English culture and of course they will have more opportunities to practise their English at home.



Our host families are very well known to us and have long experience in offering hospitality to our students. Apart from accommodation the student will be provided with breakfast, lunch and an evening meal.

The details which you record on the enrolment form will help us to select a host family which best suits your requirements.

Our host families are within an easy walking distance of the school and the centre of town. This nearness to the centre of things allows students to socialise with their friends in town in their leisure time.



## COURSES

**GENERAL ENGLISH COURSES ( semi-intensive)**

**GENERAL ENGLISH COURSES (intensive)**

**CAMBRIDGE EXAMINATION PREPARATION**

**UNIVERSITY ENTRANCE PROGRAMME**

**VACATION COURSES**

**WORK EXPERIENCE PROGRAMME**

**ENGLISH FOR SPECIAL PURPOSES**

Our courses are carefully designed to provide a first class learning experience in which students have every opportunity to improve their English language skills. While all of our students have this aim many wish to obtain a formal qualification. To this end the school provides preparation classes for Cambridge examinations, IELTS and TOEFL. The classes are international and limited to 12 students per class. All students are given an entrance test to ensure that they are placed into classes appropriate to their level.

The 'Communicative' teaching method used ensures that students participate actively and enables students to really use English in practical and realistic situations. Lessons are a blend of the four main language skills of speaking, listening, reading and writing whilst the teaching of pronunciation, grammar, spelling etc are integrated into these activities. Teachers quickly become aware of the individual needs of our students and will give whatever support is required to help students to achieve their potential.

More information about the examinations can be found on the following websites:-

<http://www.cambridge-efl.org>

<http://www.ielts.org/centres.cfm>

<http://www.toefl.org/>



## SOCIAL ACTIVITIES PROGRAMME

To complement our courses of study St.George's Clubclass offers a comprehensive programme of activities that will introduce students to English Culture and Heritage. As an example full day excursions are arranged to visit London, Oxford, Bath and Stonehenge, Cambridge, Canterbury, Windsor, etc. with half day visits to local places of interest such as Brighton, Arundel and Chichester. In addition students can relax with their friends with a variety of sporting activities including tennis, ten-pin bowling or swimming and enjoy our student parties and barbecues.

### 30 Things you can do in Worthing

1. Take a walk over: The Rings, Highdown, Washington & Sullinton, Coastal Walk, Seafront and Gardens Trail. You could go hiking, long walks, or even riding
2. Shop in our popular shopping street 'Montague Street'
3. Have fun in our bowling alley
4. Spend a day sightseeing and shopping in London
5. Dance Salsa in the pub next to the school (Café Central).
6. Try a delicious cream tea in one of the hundreds of cafés.
7. Play football with other foreign students in Homefield Park.
8. Take part in our table tennis competition
9. Enjoy swimming, diving, fun slides and other sports at Aquarina
10. Play golf, hire a boat, go gokarting at Brooklands Park
11. Watch the latest movie in one of our three cinemas, (the Dome Cinema is the oldest working cinema in England)
12. Try to sing on a karaoke night on Sundays in our pub next door, and best of Soul music on Thursday nights.
13. Eat traditional fish and chips from one of our many fish and chip shops.
14. Spend an evening listening to live music in a pub (eg. The Hare and Hounds) - there are dozens of free concerts every week.
15. Try a traditional English Breakfast or Roast Dinner in one of our traditional English pubs: 'The Wheatsheaf' 'Hare and Hounds' 'The Renaissance'
16. Visit our traditional French Market.
17. Walk around the town on a Saturday, shopping and or having coffee.
18. Go to the beach to relax, sunbathe or enjoy the view
19. Go horse riding.
20. Have a walk and a picnic in one of our beautiful Gardens.
21. Visit our Library, where you can borrow books, videos and dvds. Also use the internet for free.
22. Look through secondhand book stores - there are lots in Worthing.
23. Eat in an Italian, Mexican, Spanish, French, Indian, Chinese,... restaurant, it will remind you of home.
24. You can rent a bike from one of our cycle shops and cycle at the weekend on the downs.
25. Find anything you need for cheaper in our free paper 'Friday Ad'
26. Visit one of our interesting local Churches or Cathedrals. Also the Church of English Martyr's with Sistine Chapel Paintings.
27. Go fishing at the end of the Pier.
28. Visit our 'Amusement Arcade' on the Pier.
29. Take part in our 'Ale tasting competition'.
30. Visit our traditional 'Car Boot Sale'.



## GENERAL INFORMATION ABOUT WORTHING

Worthing is situated between the South Downs, Arun Valley and five miles of award-winning coastline. The town has grown to be the second largest town in West Sussex with a population of over 100,000.

Maximum summer temperature 30 degrees C (daytime)  
 Minimum winter temperature 3 degrees C (daytime)

- <http://www.worthing.gov.uk>
- <http://www.thisisworthing.co.uk>
- <http://www.worthing.co.uk>
- <http://www.multimap.com>



## HOW TO GET TO WORTHING



## TRAVELLING TO WORTHING

Train Enquiries  
National Express Coaches

[www.gjump.co.uk](http://www.gjump.co.uk)  
<http://www.nationalexpress.com/neh.cfm>

## INFORMATION ABOUT AIRPORTS

LONDON CITY AIRPORT  
LONDON HEATHROW  
LONDON GATWICK  
STANSTED  
BOURNEMOUTH

<http://www.airwise.com/airports/europe/LCY/index.html>  
<http://www.airwise.com/airports/europe/LHR/>  
<http://www.airwise.com/airports/europe/LGW/>  
<http://www.stanstedexpress.com/>  
<http://www.flybournemouth.com/>

# TAKE THE RIGHT DIRECTION

If you require more information please contact  
St. George's Clubclass School of English  
Revenue Chambers  
Chapel Road  
Worthing

West Sussex BN11 1BG  
Tel: +44 (0)1903 203389 / Fax: +44 (0)1903 231039  
[info@sg-cc.com](mailto:info@sg-cc.com) / [www.sg-cc.com](http://www.sg-cc.com)

If you require further information about our sister  
school in Malta please contact

Clubclass Malta  
Chelsea Court  
Triq I-Imghazel  
Swieqi STJ 11  
Malta

Postal Address:  
P.O. Box 23, St. Julians, Malta  
Tel: ++356 21 370694 / Fax: ++356 21 370607  
[mail@clubclass.com.mt](mailto:mail@clubclass.com.mt) / [www.clubclass.com.mt](http://www.clubclass.com.mt)